

LYNNE GILROY

This body of work contemplates the relationship of the ocean horizon to the island of Maui. The paintings systematically explore how the light changes depending on the location and direction of the view, time of day, season, and angle of the sun. The parameters of time and direction form the structural framework of each painting.

The work is both conceptual and literal, realistic and abstract. Formal elements merge with natural ones. The intent of each painting is to move beyond the horizon. Canvas by canvas the interpretation of the horizon appears more and more abstract until the paintings become distillations of line, color, and light.

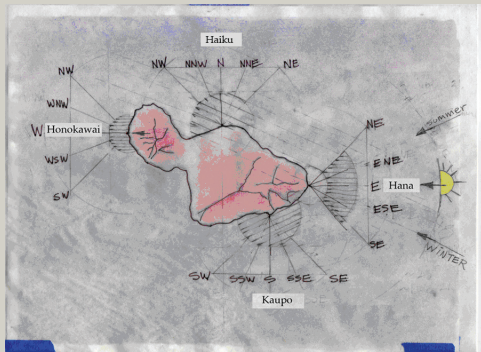


South Summer

Sketch book: The Four Sunrise Paintings

North/Winter,
East/Spring
South/Summer,
West/Fall

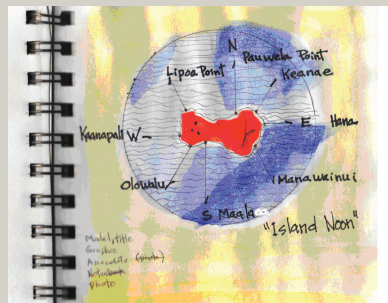
Four paintings which conceive of Maui as a monumental compass sitting in the middle of the Pacific Ocean. The intention was to



explore the quality of light at sunrise in each of the cardinal directions: north at Haiku; east at Hana; south at Kaupo; west at Honokawai. In order to convey an overall impression of light each direction was documented as an entire panorama. For example North/Winter is composed from top to bottom as: NW, NNW, NORTH, NNE, NE. The angle of the rising sun varies with the time of year. Each direction was paired with a season. The sketch below illustrates the consideration of sun angles at sunrise at winter solstice (north), spring equinox (east), summer solstice (south) and fall equinox (west).

Island Noon

The story behind *Island Noon* is an exploration of the how the light surrounding the island is effected by currents, clouds, winds, and the depths and shallows of the channels and open ocean. The time of day and year was chosen when the sun is nearly 90 degrees overhead and theoretically shining at the same angle in all directions. *Island Noon* is a comprehensive moment captured simultaneously by eight people in eight locations around Maui. The photographs were taken at 12:32 on July 19, 2006 at the moment the sun reached it's annual zenith. From top to bottom: north at Pauwela; northeast at Ke'anae; east at Hana; southeast at Manawainui; south at Ma'alae'a; southwest at Oluwalu; west at Ka'anapali; and northwest at Honolua.



LYNNE GILROY



Channel Crossing

Education

Bachelor of Fine Arts, Emily Carr Institute of Art & Design, Vancouver, B.C.
BFA - Architecture. University of British Columbia, Vancouver, B.C.
B.A.- Biochemistry, University of California, Berkeley, CA

Solo and Group Exhibitions

Natural Ground: The Intentions of Three
Maui Arts & Cultural Center, Maui Hawai'i, 2008

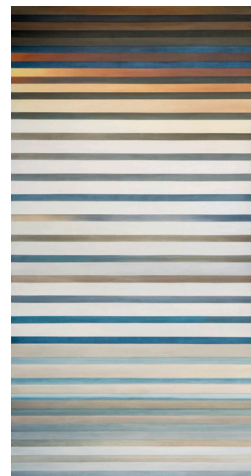
Members Exhibition, annual juried exhibition
Hui No'eau Visual Arts Center, Maui Hawai'i, 2004

Art Maui, annual juried exhibition
Schaefer International Gallery, 2001, 1999, 1997

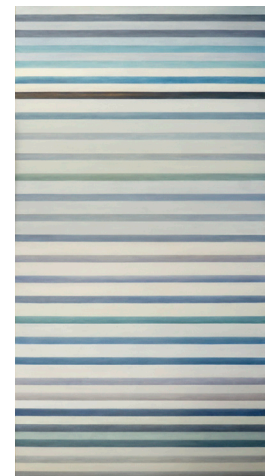
Beyond Borders, juried student exhibition
University of Washington, Bellingham, WA, 1996

The Spirit in Art, annual juried exhibition
Seymour Art Gallery, Deep Cove, B.C., 1996

Contact information: Lg73@hawaiiintel.net



Day West



Day North

NATURAL GROUND: The Intentions of Three

Lynne Gilroy, Randy Takaki, Linda Kāne

Schaefer International Gallery

May 11 - June 15, 2008

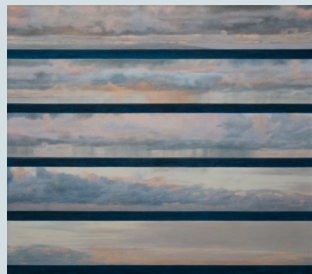
presented by



LYNNE GILROY

This body of work contemplates the relationship of the ocean horizon to the island of Maui. The paintings systematically explore how the light changes depending on the location and direction of the view, time of day, season, and angle of the sun. The parameters of time and direction form the structural framework of each painting.

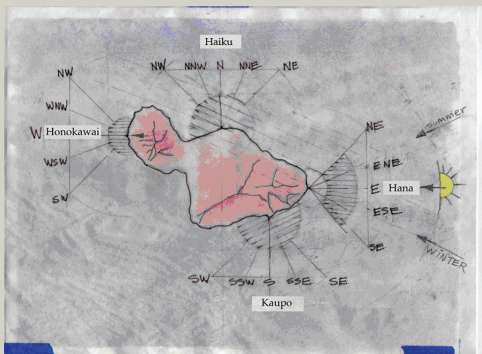
The work is both conceptual and literal, realistic and abstract. Formal elements merge with natural ones. The intent of each painting is to move beyond the horizon. Canvas by canvas the interpretation of the horizon appears more and more abstract until the paintings become distillations of line, color, and light.



South Summer

Sketch book: The Four Sunrise Paintings

North/Winter,
East/Spring
South/Summer,
West/Fall

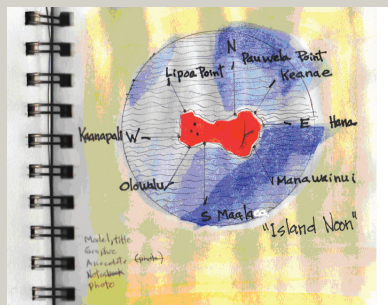


Four paintings which conceive of Maui as a monumental compass sitting in the middle of the Pacific Ocean. The intention was to

explore the quality of light at sunrise in each of the cardinal directions: north at Haiku; east at Hana; south at Kaupo; west at Honokawai. In order to convey an overall impression of light each direction was documented as an entire panorama. For example North/Winter is composed from top to bottom as: NW, NNW, NORTH, NNE, NE. The angle of the rising sun varies with the time of year. Each direction was paired with a season. The sketch above illustrates the consideration of sun angles at sunrise at winter solstice (north), spring equinox (east), summer solstice (south) and fall equinox (west).

Island Noon

The story behind *Island Noon* is an exploration of the how the light surrounding the island is effected by currents, clouds, winds, and the depths and shallows of the channels and open ocean. The time of day and year was chosen when the sun is nearly 90 degrees overhead and theoretically shining at the same angle in all directions. *Island Noon* is a comprehensive moment captured simultaneously by eight people in eight locations around Maui. The photographs were taken at 12:32 on July 19, 2006 at the moment the sun reached it's annual zenith. From top to bottom: north at Pauwela; northeast at Ke'anae; east at Hana; southeast at Manawainui; south at Ma'ala'e'a; southwest at Oluwalu; west at Ka'anapali; and northwest at Honolua.



LYNNE GILROY



Channel Crossing

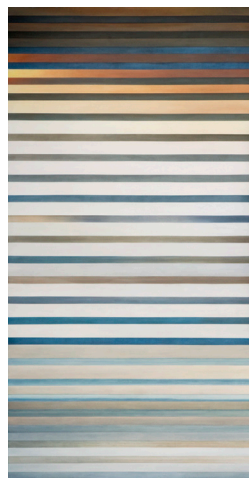
Education

BFA Program, Emily Carr Institute of Art & Design, Vancouver, B.C.
Bachelor of Architecture, University of British Columbia, Vancouver, B.C.
B.A.- Biochemistry, University of California, Berkeley, CA

Solo and Group Exhibitions

Natural Ground: The Intentions of Three
Maui Arts & Cultural Center, Maui Hawai'i, 2008
Members Exhibition, annual juried exhibition
Hui No'eau Visual Arts Center, Maui Hawai'i, 2004
Art Maui, annual juried exhibition
Schaefer International Gallery, 2001, 1999, 1997
Beyond Borders, juried student exhibition
University of Washington, Bellingham, WA, 1996
The Spirit in Art, annual juried exhibition
Seymour Art Gallery, Deep Cove, B.C., 1996

Contact information: Lg73@hawaiiintel.net



Day West



Day North

NATURAL GROUND: The Intentions of Three

Lynne Gilroy, Randy Takaki, Linda Kāne

Schaefer International Gallery

May 11 - June 15, 2008

presented by

Maui 
Arts & Cultural Center

One Cameron Way • Kahului, HI 96732 www.mauiarts.org