

Loading Doors

To Dressing Rooms

Castle Theater House Lighting Plot

Inventory

Source 4 Lekos - 68	Altman 360Q 6x9 - 54
Lenses used:	Altman 360Q 6x12 - 70
-19 degree - 4	Altman 360Q 6x16 - 70
-26 degree - 35	Par 64 1k - 58
-36 degree - 30	Strand 8x13 w/iris - 23
-50 degree - 4	10" Fresnels 1k - 8
Zoom units 10-30 - 4	MR-16 strips - 6

Storage area for Orchestra Shell walls

Hazer 303
304
305
306
307
308

Disconnect panel 3 phase 400 amps per leg
Disconnect panel 3 phase 400 amps per leg

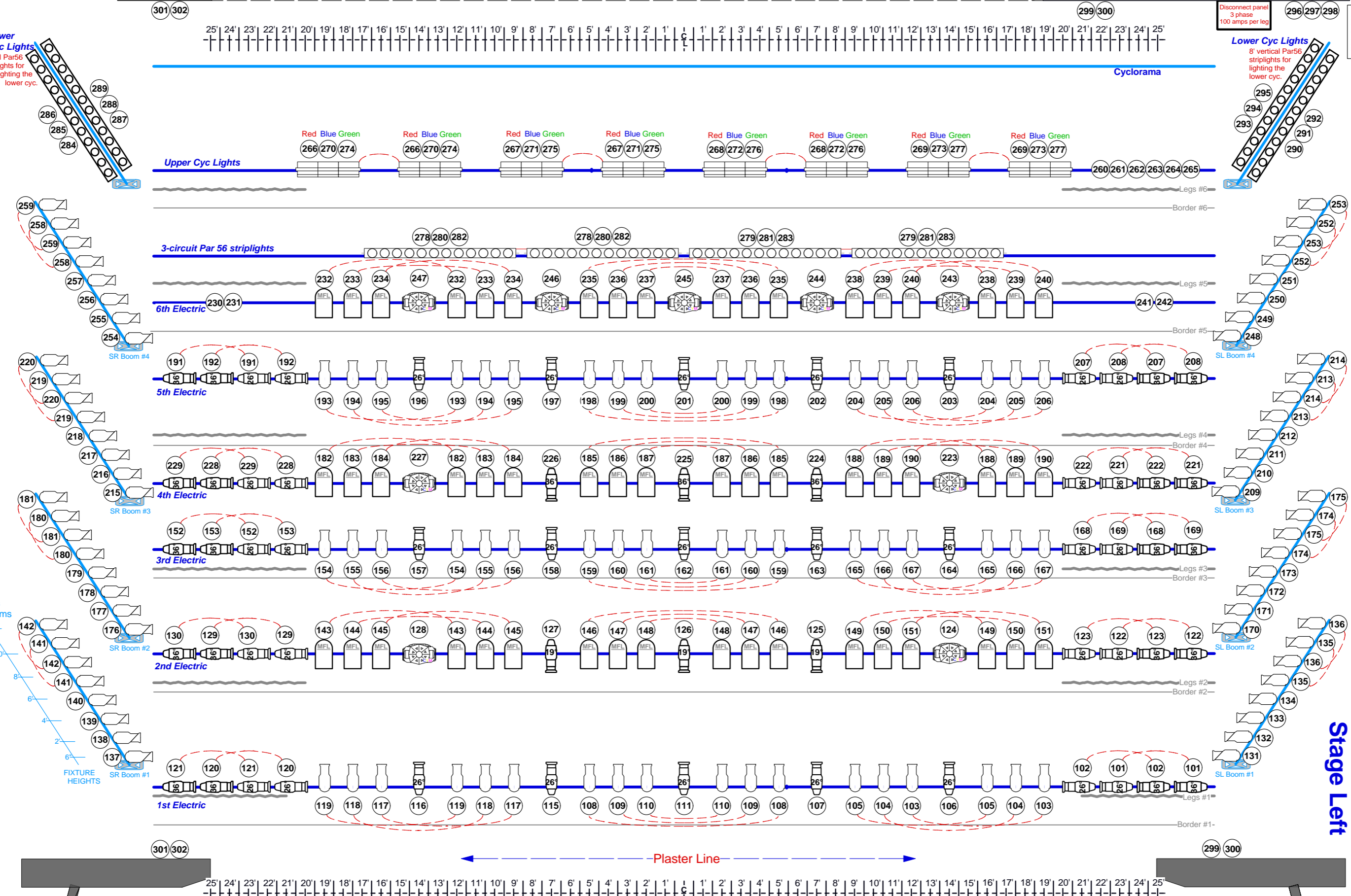
Lower Cyc Lights
8' vertical Par56 striplights for lighting the lower cyc.

Lower Cyc Lights
8' vertical Par56 striplights for lighting the lower cyc.

NOTES
* limited use
** requires considerable labor to move
*** permanently installed - cannot be moved

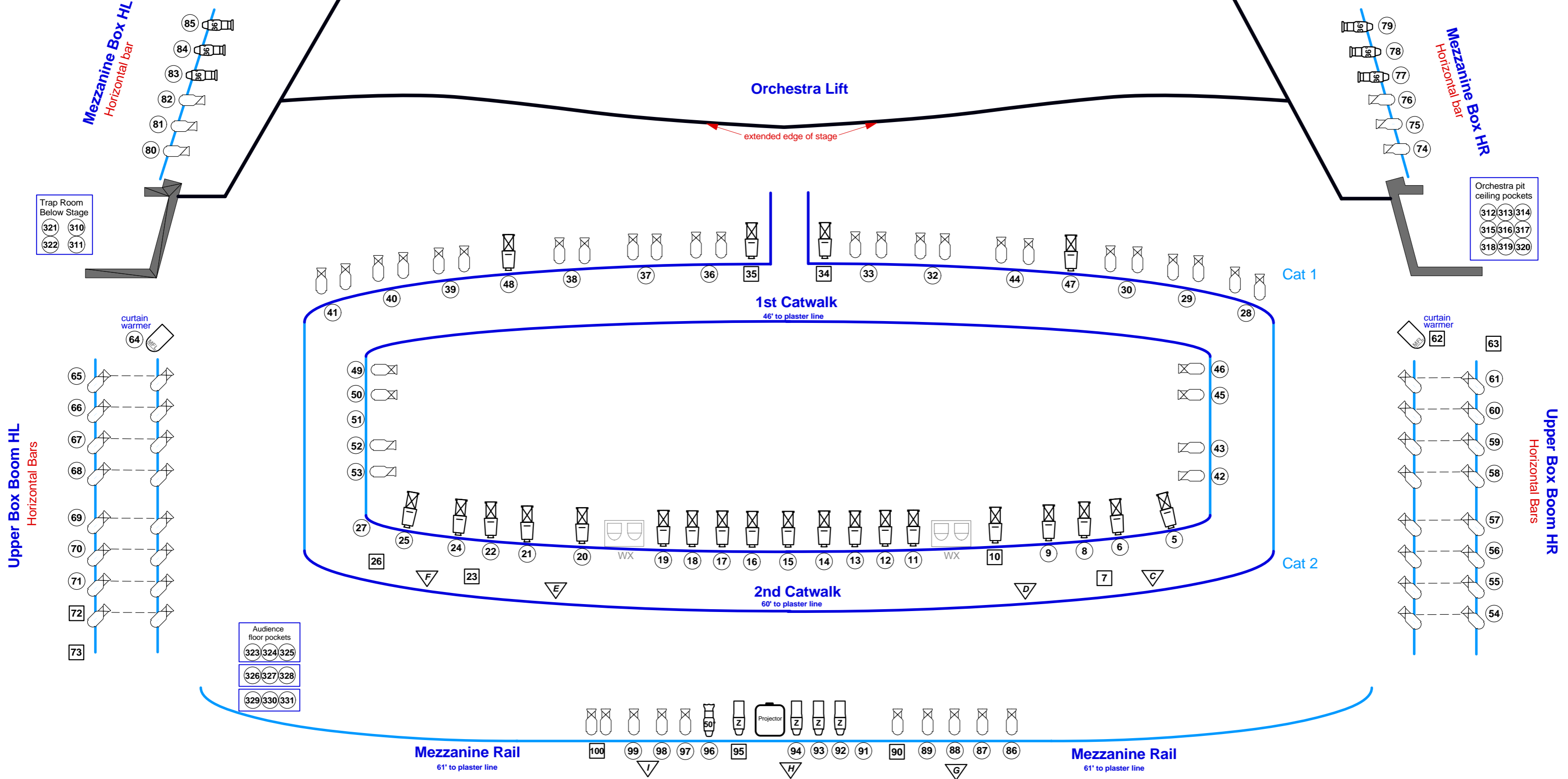
284-289
230-238
254-259
191-199
215-220
182-180
178-181
111-121
137-142

296-298
290-295
289-277
286-288
278-283
259-247
251-229
248-263
200-208
182-180
208-214
161-169
148-161
170-178
152-130
101-110
131-138



77 Cyclorama	41' 11"
76 S.R. Tab	41' 5"
75 Open	40' 11"
74 S.L. Tab	40' 5"
73 Open	39' 11"
72 Open	39' 5"
71 Open	38' 11"
70 Open	38' 5"
69 Stored Drops	37' 11"
68 Open	37' 5"
67 Open	36' 11"
66 Cyc Lights**	36' 5"
65 Open*	35' 11"
64 #6 Legs 40'	35' 5"
63 Open	34' 11"
62 #6 Border	34' 5"
61 White Scrim	33' 5"
60 Black Scrim	32' 11"
59 Open*	32' 5"
58 Par 56 Strips	31' 11"
57 Open*	31' 5"
56 Open	30' 11"
55 #5 Legs 40'	30' 5"
54 Open*	29' 11"
53 #6 Electric**	29' 5"
52 Open*	28' 11"
51 Open	28' 5"
50 #5 Border	27' 11"
49 Open	27' 5"
48 Open	26' 11"
47 Orch. Shell***	26' 5"
46 Open*	25' 11"
45 #5 Electric**	25' 5"
44 Open*	24' 11"
43 Open	24' 5"
42 Open	23' 11"
41 Open	23' 5"
40 #4 Legs 40'	22' 5"
39 #4 Border	21' 11"
38 Open	21' 5"
37 Open	20' 11"
36 Open*	20' 5"
35 #4 Electric**	19' 11"
34 Open*	19' 5"
33 Open	18' 11"
32 Orch. Shell***	17' 11"
31 Open*	16' 11"
30 #3 Electric**	16' 5"
29 Open*	15' 11"
28 #3 Legs 40'	15' 5"
27 #3 Border	14' 11"
26 Open	14' 5"
25 Open	13' 11"
24 Open	13' 5"
23 Black Traveler 12"	12' 11"
22 Open	12' 5"
21 Open	11' 11"
20 #2 Electric**	10' 11"
19 Open*	10' 5"
18 Open	9' 11"
17 #2 Legs 40'	9' 5"
16 #2 Border	8' 11"
15 Open	8' 5"
14 Orch. Shell***	7' 5"
13 Speakers**	6' 5"
12 Open*	5' 11"
11 Open	5' 5"
10 Open	4' 11"
9 Open*	4' 5"
8 #1 Electric**	3' 11"
7 #1 Legs 42"	3' 5"
6 Film Screen***	2' 11"
5 Film Traveler**	2' 5"
4 #1 Border	1' 11"
3 Main Curtain***	1' 5"
2 Valance	1' 1"
1 Fire Curtain***	5"

edge of stage



KEY

	ETC Source 4 575w 19 degrees 4.5" frame		Altman leko 6 x 16 1k 19 degrees 7.5" frame		Studio Spot CMY 575 watt
	ETC Source 4 575w 26 degrees 4.5" frame		Altman leko 6 x 12 1k 26 degrees 7.5" frame		Par 56 strips 300 watt ea
	ETC Source 4 575w 36 degrees 4.5" frame		Altman leko 6 x 9 1k 37 degrees 7.5" frame		3-cell Cyclights 1k ea
	ETC Source 4 575w 50 degrees 4.5" frame		Par 64 1k 10" frame		20 amp circuit 2.4k
	ETC Source 4 575w Zoom lens 15 to 30 degrees		Strand 8 x 13 w/iris 1k Located in f.o.h. 10" frame		20 amp non-dim circuit
					50 amp circuit 6k



Orchestra Lift
The Orchestra Lift area moves vertically and can be used in several configurations. Its default position is at audience level with seats installed but it can also be used in its highest position as an extension to the stage with the seats removed or it can be lowered to a position below audience level and used as an orchestra pit.

Lighting Control
The lighting control booth is located in the back of the house on the orchestra level.
Dimmers are Strand CD-80 dimmer racks with 323 2.4k dimmers and 10 6k dimmers.

ETC Obsession II console w/48 subs
Obs II Designers console

House Lighting Plot	scale: 1" = 5'
The Maui Arts & Cultural Center Castle Theater	
www.mauiarts.org	One Cameron Way Kahului, HI 96732
Lighting Director: Mark Astrella 808-242-2787 Ext. 251	cel 808-870-5613 fax 808-242-1506
Revision Date: Feb. 2010	mark@mauiarts.org
Created using VectorWorks 2008	Changes to this plot are made often. Please check with us to be sure you have the current version.